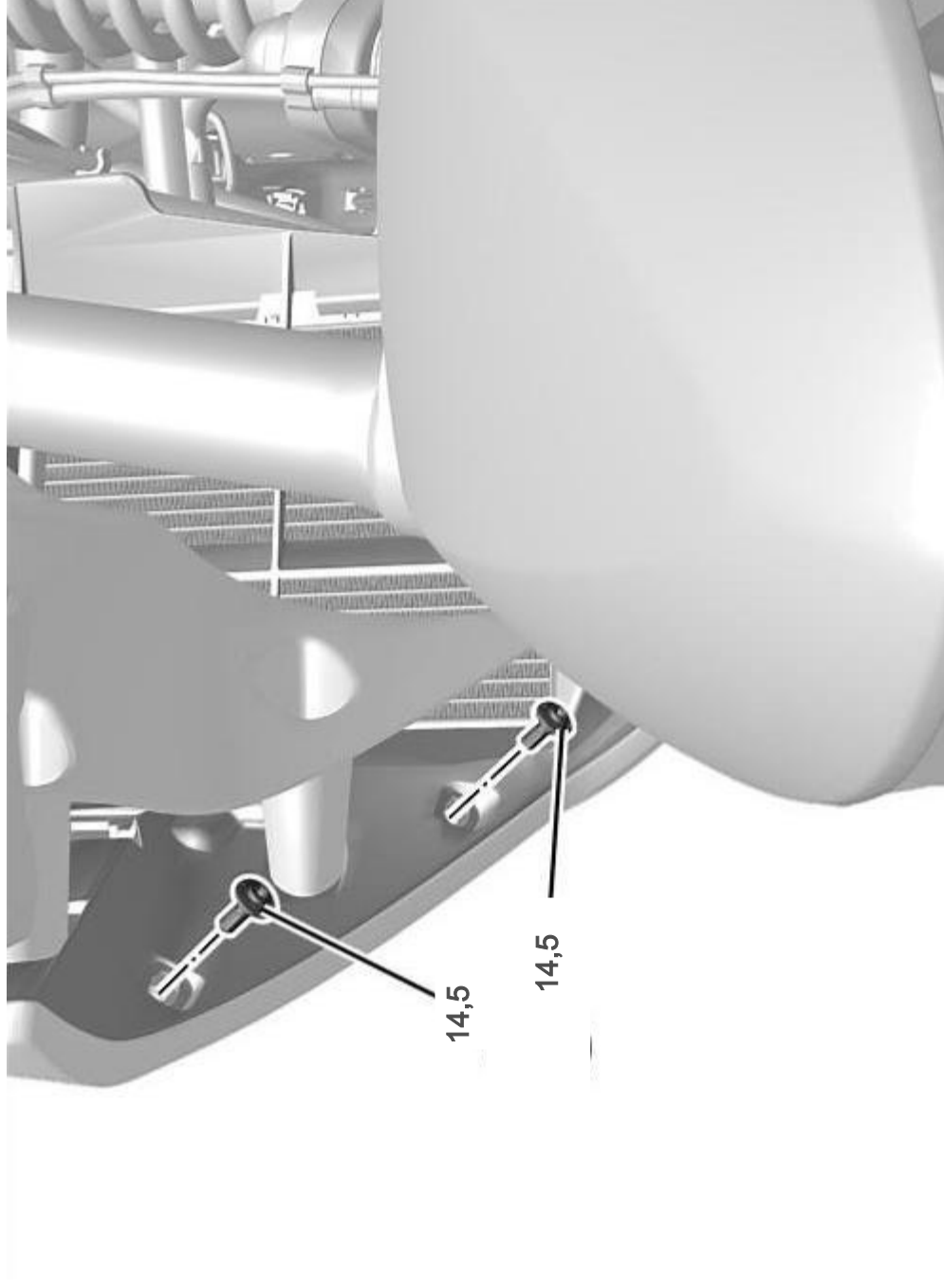


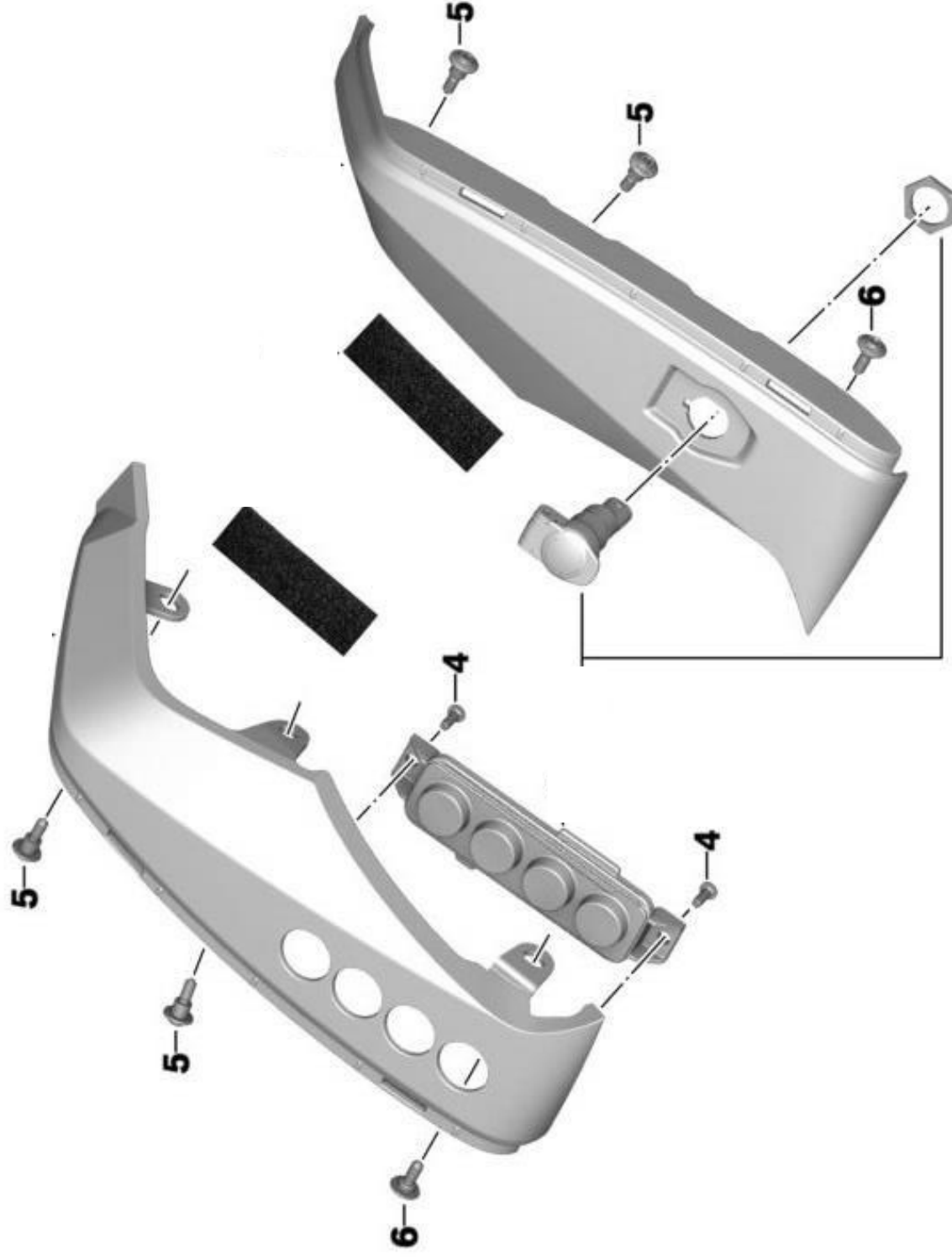
SIDE PANEL



14,5 = M5 x 14,5 mm With Shoulder

17,5 = M5 x 17,5 mm With Shoulder

INSIDE SIDE PANEL



4 = K40x12

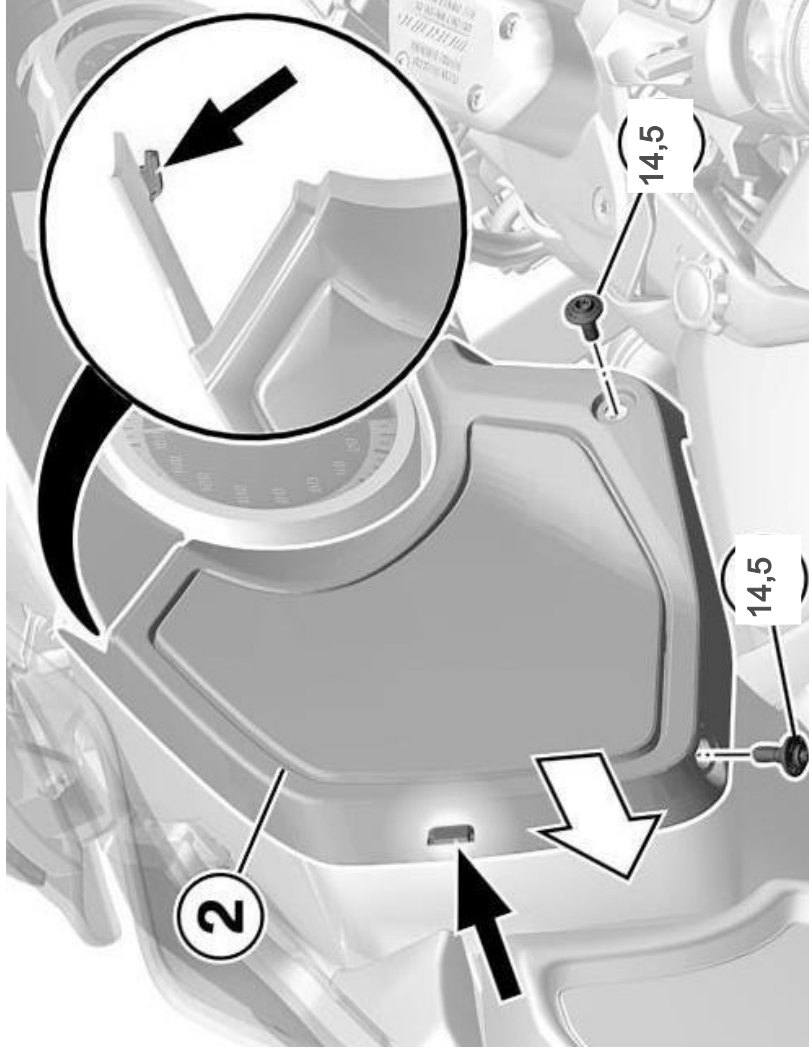
5 = Binding Head Screw M5x16-A2-80

6 = M5x14 Without Shoulder

This diagram illustrates the exploded view of a motorcycle seat assembly. The components shown include the main seat cushion, a backrest, and side panels. Various fasteners, including screws and bolts, are indicated with leader lines and part numbers: 14,5 and 17,5. The assembly is shown in a disassembled state to show the relationship between the parts.

17,5S = M5 x 17,5 mm With Shoulder

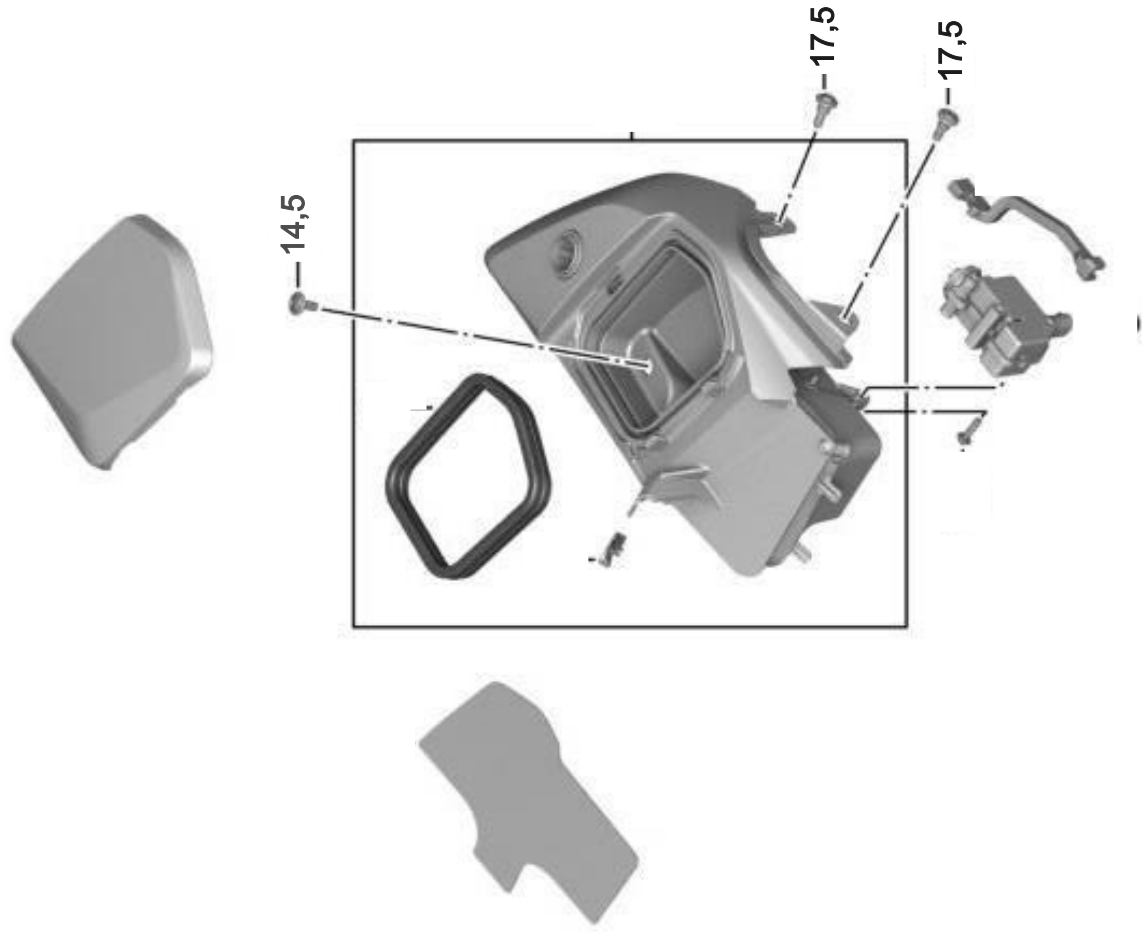
SPEAKER COVER



14,5 = M5 x 14,5 mm With Shoulder

17,5 = M5 x 17,5 mm With Shoulder

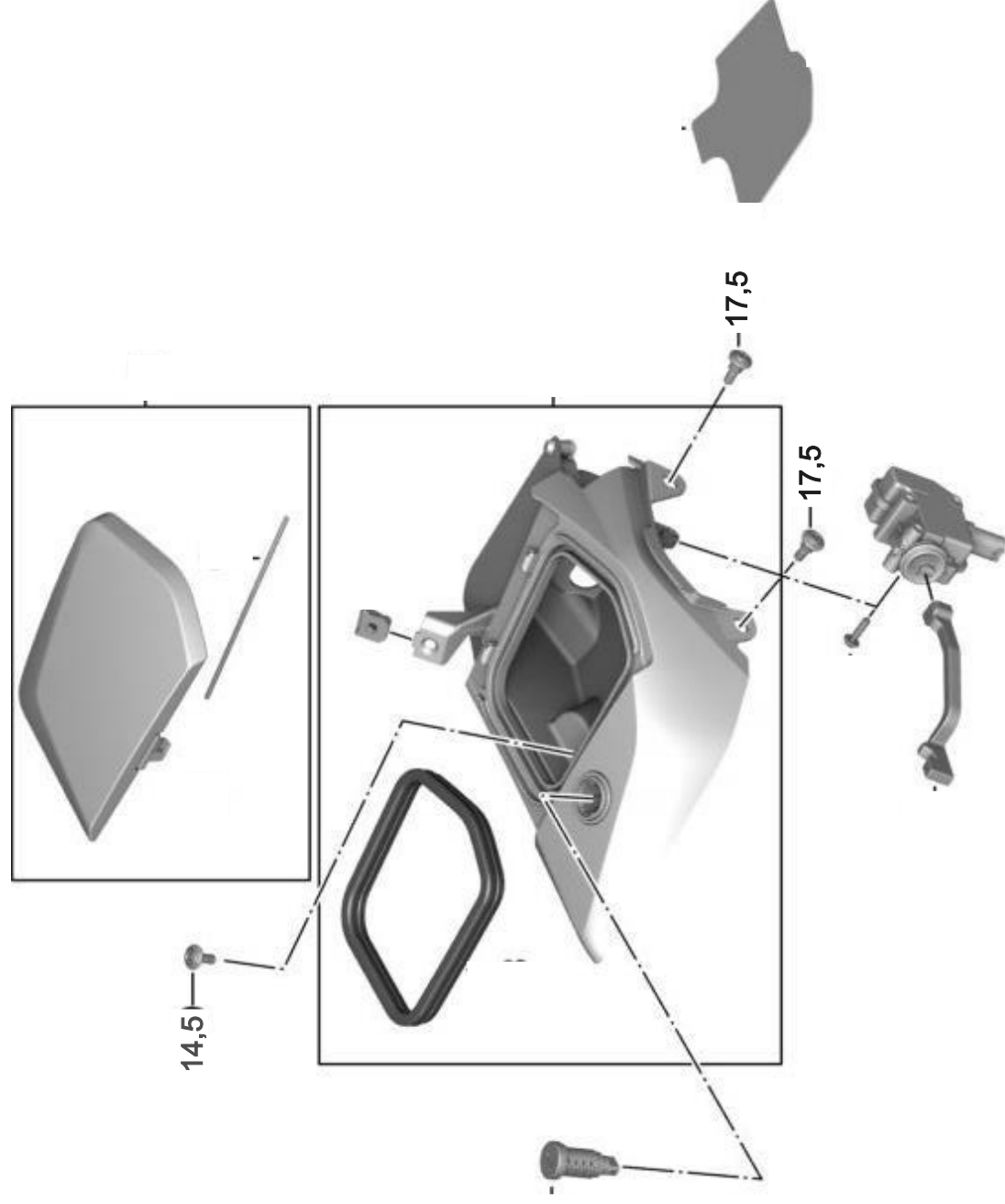
STOWAGE COMPARTMENT



14,5 = M5 x 14,5 mm With Shoulder

17,5 = M5 x 17,5 mm With Shoulder

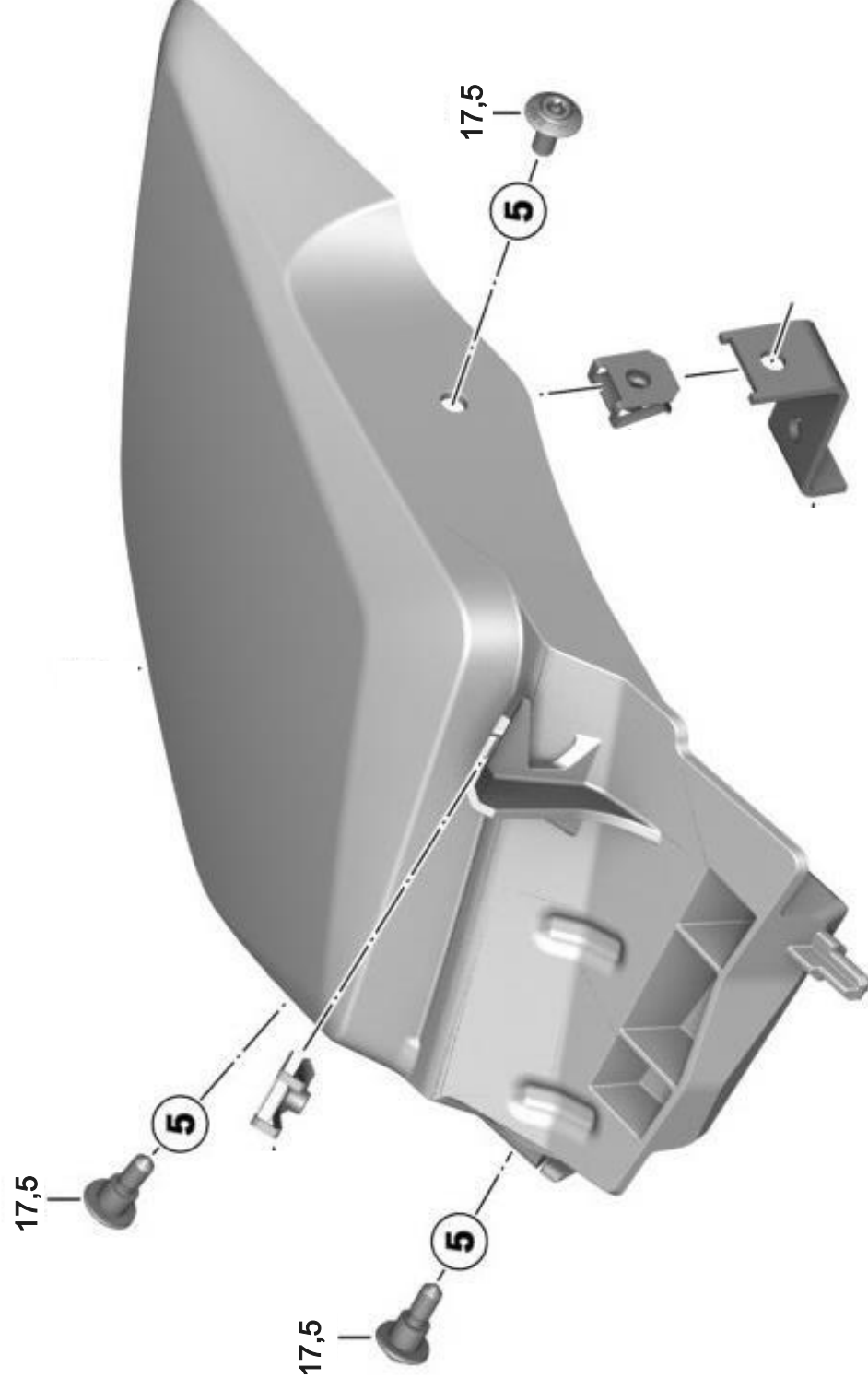
STOWAGE COMPARTMENT



14,5 = M5 x 14,5 mm With Shoulder

17,5 = M5 x 17,5 mm With Shoulder

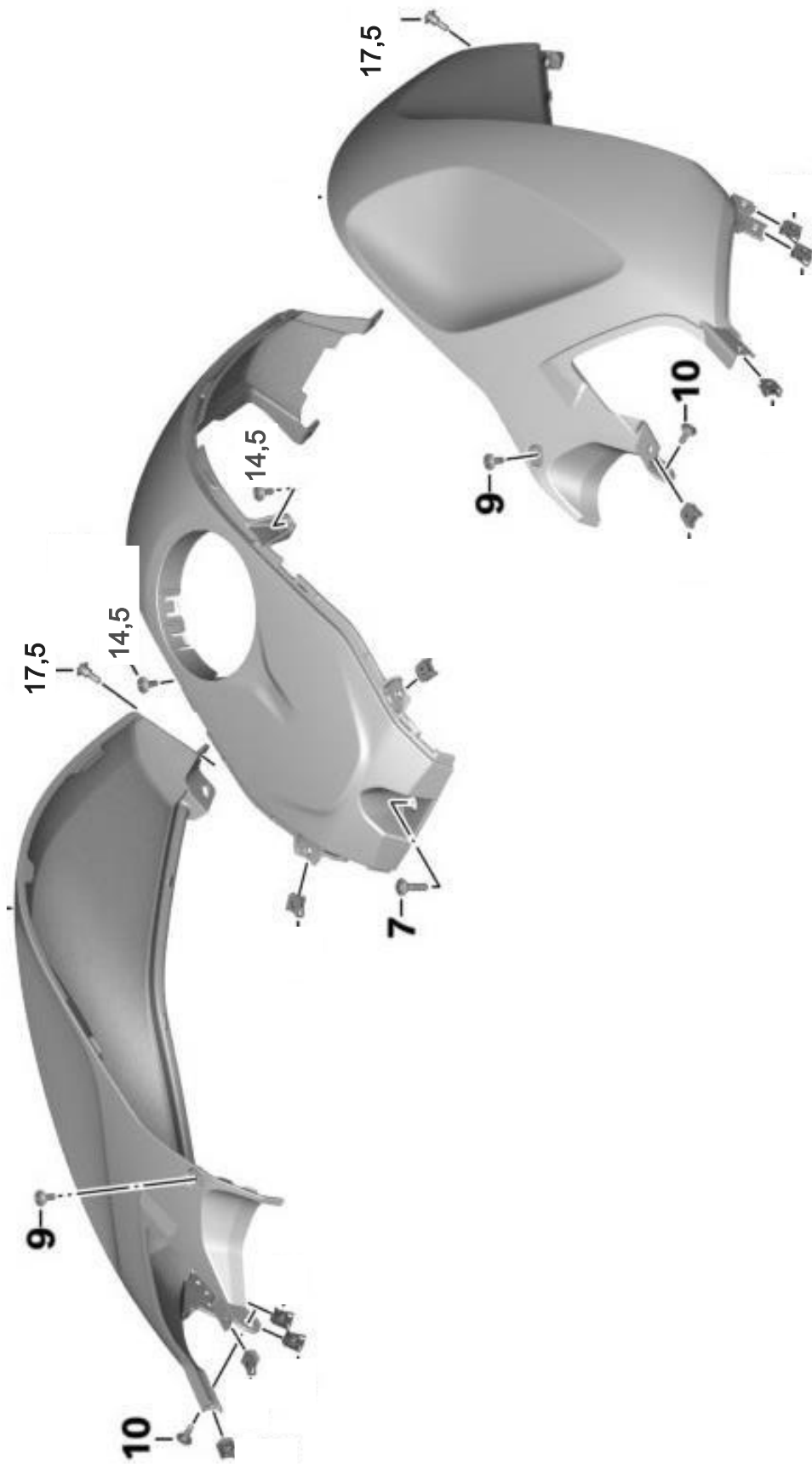
STOWAGE COMPARTMENT



14,5 = M5 x 14,5 mm With Shoulder

17,5 = M5 x 17,5 mm With Shoulder

FUEL TANK - COVER



7 = M6 x 25mm With Shoulder

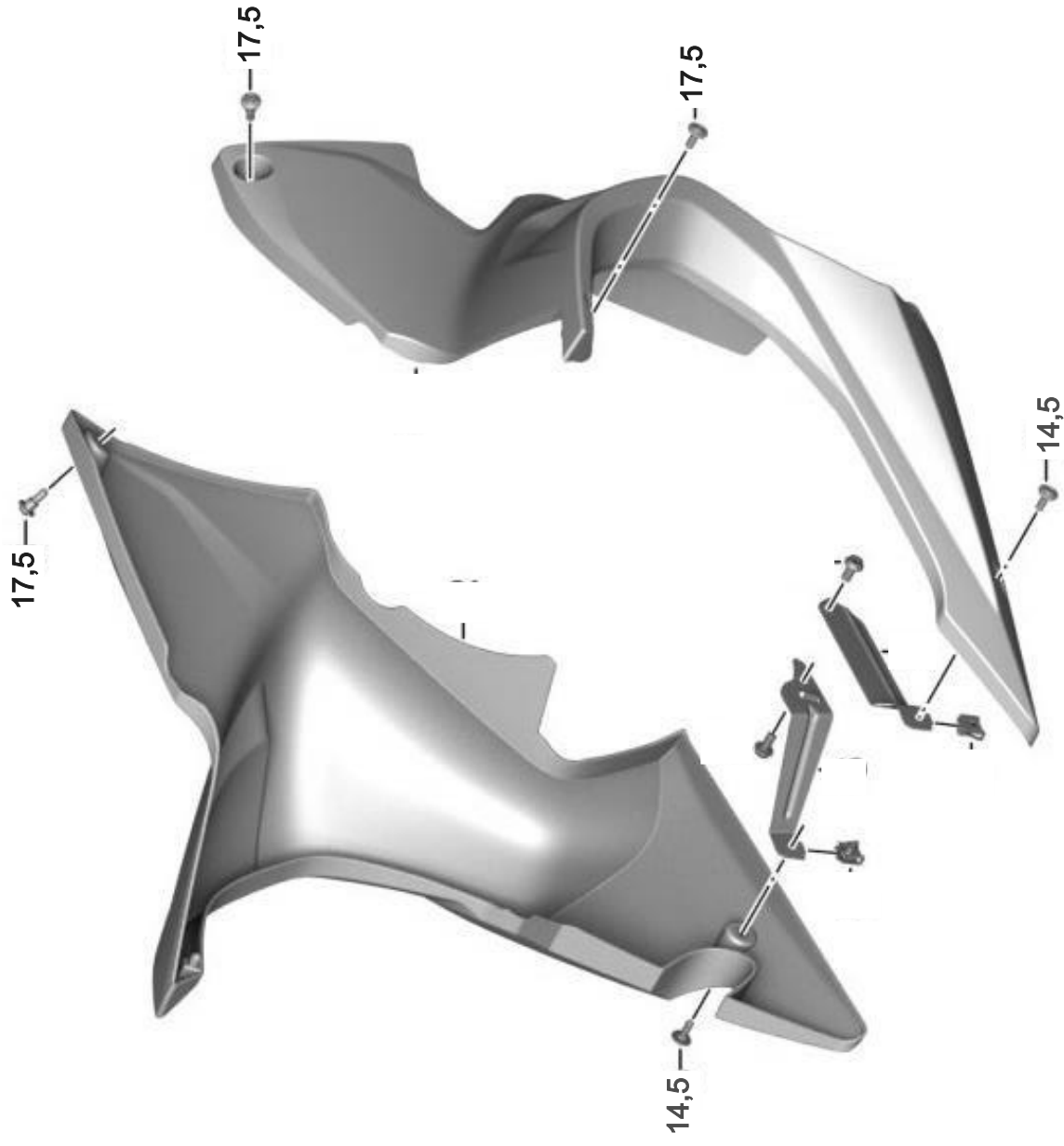
9 = M5 x 12 Without Shoulder

10 = M5 x 14 Without Shoulder

14,5 = M5 x 14,5 mm With Shoulder

17,5 = M5 x 17,5 mm With Shoulder

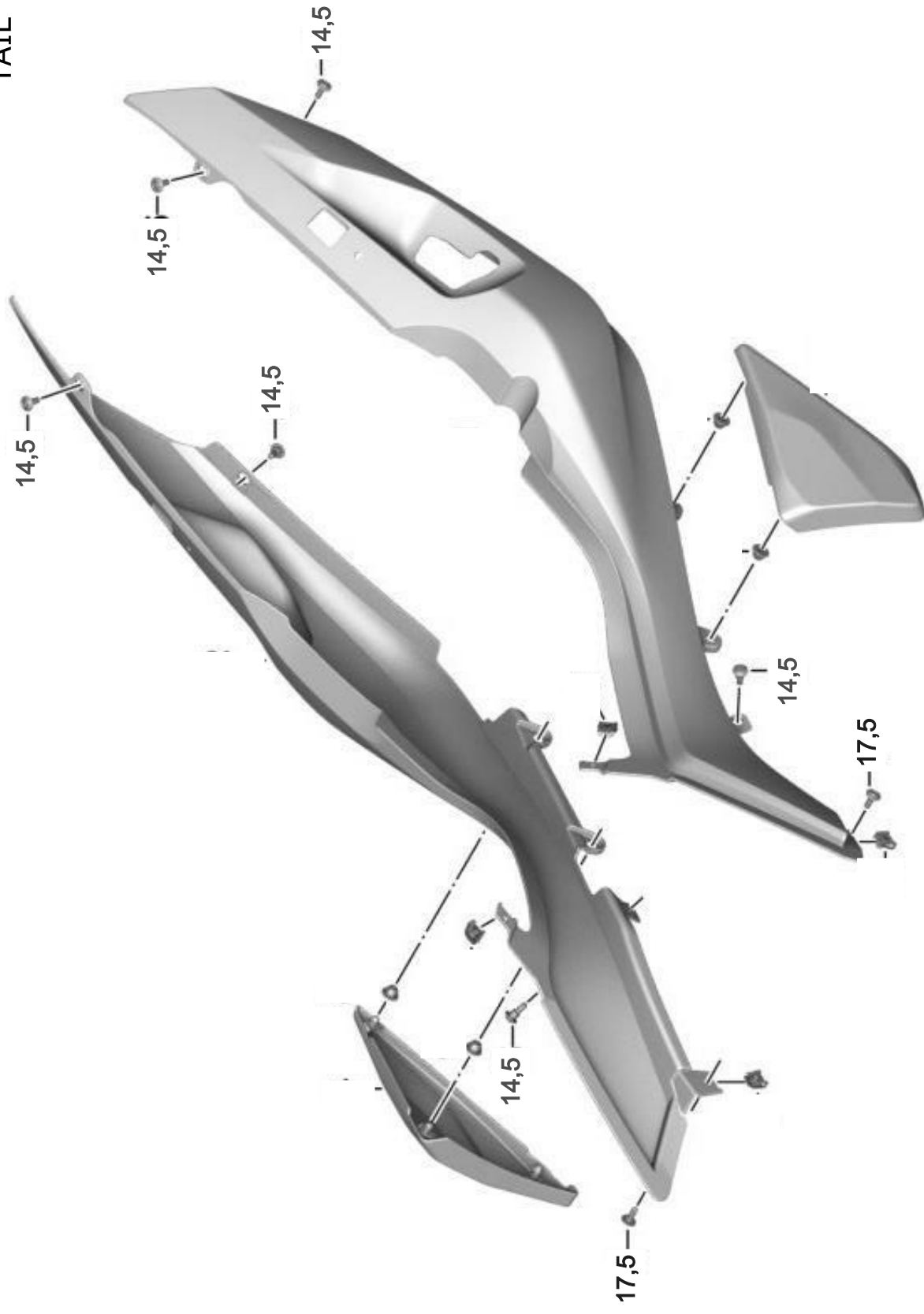
ENGINE SPOILER



14,5 = M5 x 14,5 mm With Shoulder

17,5 = M5 x 17,5 mm With Shoulder

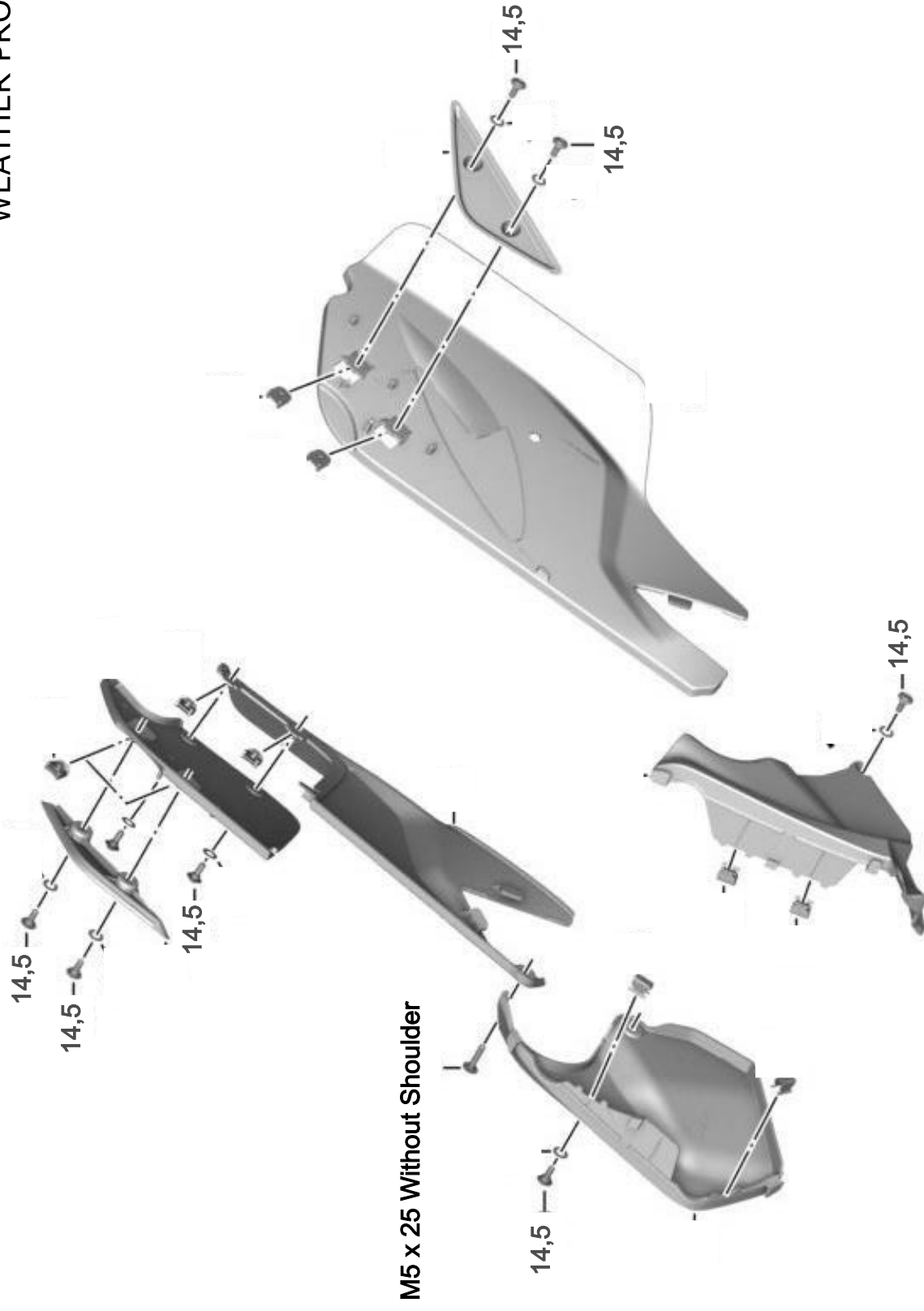
TAIL TRIM FAIRING



14,5 = M5 x 14,5 mm With Shoulder

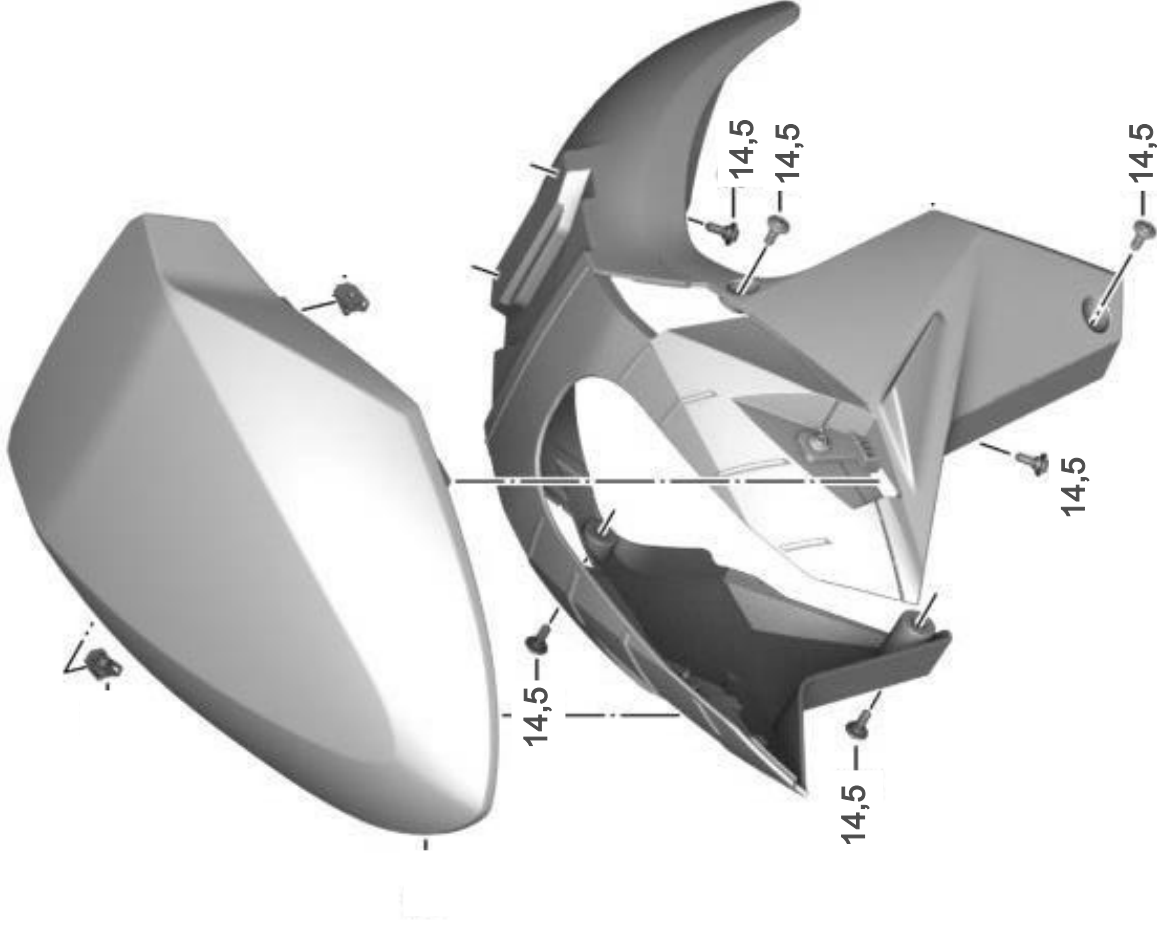
17,5 = M5 x 17,5 mm With Shoulder

"WEATHER PROTECTION KIT"



14,5 = M5 x 14,5 mm With Shoulder 17,5 = M5 x 17,5 mm With Shoulder

FRONT WHEEL FENDER



14,5 = M5 x 14,5 mm With Shoulder

17,5 = M5 x 17,5 mm With Shoulder